

deeper



DEEPER SMART SONAR PRO

CHANGING THE WAY YOU FISH



WHEN YOU HEAR THE WORDS, “FISH FINDER” OR “DEPTH FINDER”, YOU NATURALLY THINK OF A MOUNTED BOAT SONAR, RIGHT? WELL, THINK AGAIN.

Meet Deeper PRO, a portable, castable and wireless fish finder that utilizes smart technology to display sonar scans directly to your smart device. Now ANY ANGLER that wants to go fishing ANYTIME will have a fish finder they can take ANYWHERE.

WHY PRO SMART SONAR?

The Deeper PRO fish finder is designed for avid anglers, with an **emphasis on small boat or ice fishing**, who want an excellent casting range, scanning depth and mapping feature. Paired with the Deeper App, you'll have the strategic edge to catch more, catch faster and simply, catch better.

MAP THE WATERS

Create lake maps while trolling from your small boat or mark every hole when ice fishing. The PRO utilizes your smartphone's GPS to map water bodies. All of your maps are automatically saved to Deeper Lakebook™, your personal fishing journal.

VERY POWERFUL

Scans down to 260ft. / 80m with accuracy and precision. It generates its own Wi-Fi signal (no cellular data needed) to connect to your smart device, so cast out to 330 ft. / 100m and feel confident there will be rock-solid connectivity.

EXCELLENT TARGET SEPARATION

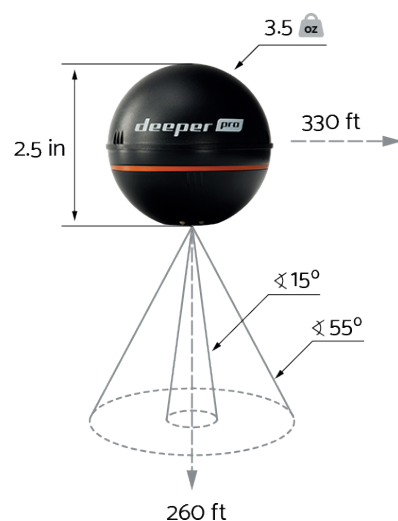
With a 1" / 2.5cm target separation, you'll be able to easily pinpoint target species and track even the tiniest lure when vertical jigging.

2 BEAM FREQUENCIES FOR ACCURACY

Cover large expanses and locate fish holding spots faster with the wide angle beam 55°(90kHz) or home in on specific features and target species with a 15°(290kHz) narrow angle beam.

WHY DEEPER?

We are pioneers in castable, smart sonar technology. With our first smart sonar released in 2013, we have only moved onward and upward, constantly challenging ourselves to innovate more and do everything better. Our sonars are superior quality, designed and made in Europe, and with 24/7 customer care, our anglers always come first.





TOTALLY VERSATILE. Various fishing modes for different types of fishing. Fish in the summer trolling on a boat or in the winter on the ice using the flasher display. Use in lakes, ponds, rivers and even salt water. One sonar fits all.

USER-FRIENDLY APP. See fish, vegetation, structure, bottom contour, hardness and consistency. Deeper App includes water temperature and depth, various color palettes for viewing, optional icons and alarms, sonar sensitivity adjustments and ice flasher display.

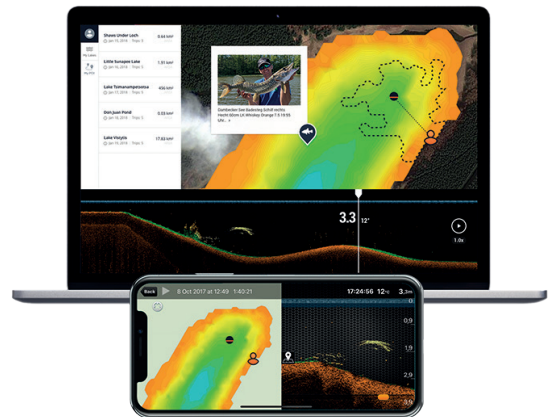
EASILY PORTABLE. Wireless, small and lightweight. It's smaller than a tennis ball and weighs only 3.5oz (100g). It comfortably fits in a hatch, tackle pack and even your pocket.

ONLY QUALITY. Made from highly durable ABS plastic and a silicone gasket, it's not only water proof, but weather proof, handling temperatures as low as -4°F / -20°C. Our Deeper App is considered to be one of the best in the industry, with monthly updates and new features added regularly.

deeper LAKEBOOK™

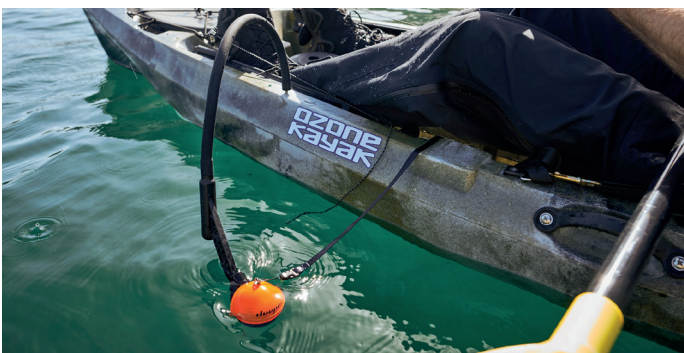
DEEPER LAKEBOOK™ - BATHYMETRY MANAGEMENT PLATFORM

Every sonar scan and bathymetric map you create with your Deeper PRO series fish finder, every photo you make and note you take using the Deeper App, all in one place with Lakebook™, your personal journal for better fishing.



FLEXIBLE ARM MOUNT 2.0

The Flexible Arm Mount 2.0 is a custom designed trolling mount for your Deeper fish finder. Easy to set up and install, it is suitable for kayaks and small boats.





PRODUCT TECH SPECS:

| | |
|---|---|
| Material | ABS |
| Compatibility | iOS 9 & Android 4.4, to the latest versions |
| Sonar Type | Dual beam |
| Frequency (Beam cone) | 290 kHz (15°)/90 kHz (55°) |
| Depth Range Max/Min | Max 260ft (80 m) / Min 2ft (0.5 m) |
| Sonar Scan rate | Up to 15 scans per second |
| Temperature sensor | Water surface temperature sensor |
| Temperature Units | Celsius/Fahrenheit |
| Operating Temperature | -20°C to 40°C/-4°F to 104°F |
| Internal Battery | Lithium Polymer, 3.7V Rechargeable, 850mAh |
| Power Supply input (for charging battery) | Micro USB B type, 5V DC, 450mA max |
| Power Adapter (not included in the box, recommended) | Input AC 110V/240V. Output Micro USB, 5V 450mA |
| Connection type | Wi-Fi |
| Connection Range | Up to 330ft (100 m). Depends on the OS and smartphone model |
| Color | Black |

PRODUCT LOGISTIC SPECS:

| | |
|-------------------------|---------------------------------------|
| Model | DP1H20S10 |
| EAN | GLB 4779032950244/ Asia 4779032950251 |
| Product size | 2.5 in/65 mm Diameter |
| Product weight | 3.5oz/100 g |
| Retail packaging size | 150x135x73mm/5.9x5.32x2.87in |
| Retail packaging weight | 350g/12.4oz |
| QTY per multipack | 32 |
| Multipack weight | 12kg/26.5lb |
| Multipack size | 32x55x32cm/12.6x21.7x12.6in |
| Harmonized customs code | 9014800000 |
| Country of origin | Made in Lithuania |

LEARN MORE ABOUT THE DEEPER SMART SONAR PRO

 See it in action
 on our YouTube channel
www.youtube.com/buydeeper

 Get tips and the latest news
 on our Facebook page
www.facebook.com/deepersonar

 Find full product details, reviews
 and comparisons on our website
www.deepersonar.com