

**NASHBATT
KNOWHOW**

CITRUZ



CULTURED® POP UPS

Another Nashbait advancement, Cultured® Pop ups use the same deadly layering and glazing process to produce a slow dissolve skin rich in nucleotides, free aminos and vitamins and minerals.

Without needing PVA sticks or bags, a Culture Skin ensures a steady release of attractors around the hookbait but due to its neutral density the bait remains balanced both before and after the skin dissolves.

Perfect for drawing attention to a hookbait over a baited area or fishing as a high attract single bait Cultured® Pop Ups have proven absolutely deadly for the most difficult carp, producing a faster response than other hookbaits.

Rig Components:

- **Fang Gyro**
- **Skinlink**
- **Bait Screw**
- **Tungsten Hook Bead**
- **Tungsten Swivel/Knot Bead**

www.nashtackle.com

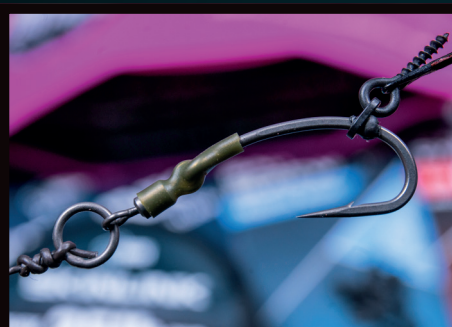




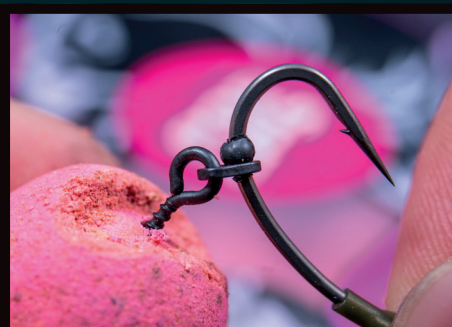
1 The Culture Skin of the pop ups coats the bait in attractors normally denatured in the boiling process. This unique food signal is what makes them so special.



2 Using a baiting needle or rig scissors scrape away the Culture skin at the top of the bait to reveal the central Citruz Airball pop up.



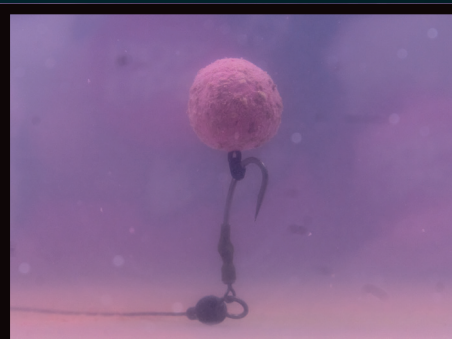
3 The Fang Gyro rig is the perfect partner for a Cultured® Pop Up. Tie with Skinlink, add a Bait Screw and secure it at the top of the shank with a Tungsten Hook Bead.



4 The inner Airball core of Cultured® Pop Ups is gripped very securely by a Bait Screw there is no need for a hair. Twist the fine screw into the exposed core bait.



5 If the bait is too buoyant for the weight of the Fang Gyro and hook bead, slide a Tungsten Swivel/Knot Bead over the eye of the swivel on the Gyro.



6 The skin dissolves over several hours depending upon water temperature, leaving attraction suspended around the core pop up and on the lake bed.